

Situated in the Bowen Basin in the Central Highlands of Queensland, Belyando Shire is a region with strong ties to its rich history in the mining and agricultural industries. Today, its thriving economy contributes significantly to Queensland's total exports in these commodities, while the economy continues to grow as more mineral deposits are developed and agricultural practices are enhanced.

Belyando Shire is comprised of two major townships, Moranbah and Clermont. Clermont is the local centre for mining, agriculture and an expanding tourism industry, while Moranbah is the base for the Shire's coal mining industry and associated support industries.

Belyando Shire amalgamated with Broadsound and Nebo Shires on 17 March 2008 following the local government election to form the Isaac Regional Council.

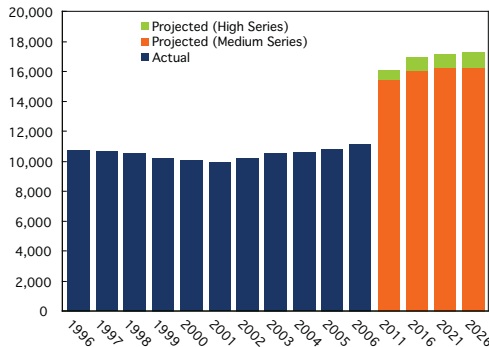


## Population

There were an estimated 11,185 persons in Belyando Shire in 2006, 3.6% more than in 2005. Belyando accounted for 7.0% of the Mackay Whitsunday Region population in 2006. Between 2006 and 2026, the population of Belyando is projected to increase at an average annual rate of 1.9% to 16,283 persons in 2026. This translates to an extra 255 persons in Belyando each year over the period.

However, if current high growth experienced by the Mackay Whitsunday Region continues over the next 20 years, Belyando is expected to experience a higher growth rate of 2.3% per annum to 17,280 persons by 2026.

Estimated Resident Population  
Belyando Shire



Note: QDLGP population projections for Belyando Shire have been recently revised, based on current expectations of mining expansion.

Source: ABS 3218.0, QDLGP Population Projections 2006

## Employment

The Belyando Shire trend labour force experienced an annual increase of 1.5% to 6,250 persons in the September Quarter 2007. The trend number of employed persons (6,205 persons) also exhibited an annual increase since the September Quarter 2006 (up 1.9%), while the trend number of unemployed (49 persons) significantly declined by 32.5% over the same period.

Expansion in coal production in the region has likely fuelled the increase of employed persons and labour force numbers, and the decline in unemployment in recent quarters.

Trend Employment Indicators, Belyando Shire

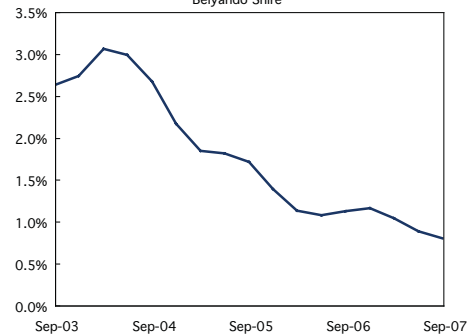
	Sep Qtr 2007	% Change on Sep Qtr 2006
Labour Force (no.)	6,250	1.5%
Employed (no.)	6,205	1.9%
Unemployed (no.)	49	-32.5%
Unemployment Rate (%) (a)	0.8%	-0.3%

Note: This data is derived through trending the unsmoothed series from DEWR, thus the trend labour force does not necessarily equal trend employed persons plus trend unemployed persons. (a) The change in the unemployment rate is in percentage point terms.

Source: DEWR Small Area Labour Market Surveys, AECgroup

The trend unemployment rate in Belyando Shire has steadily declined since the March Quarter 2004, and fell a further 0.3 percentage points over the year to 0.8% in the September Quarter 2007.

Trend Unemployment Rate  
Belyando Shire



Source: DEWR Small Area Labour Market Surveys, AECgroup

## Housing

Belyando Shire had 68 residential building approvals in the 2007 calendar year, 19.3% less than in 2006.

# Belyando Shire LGA Profile

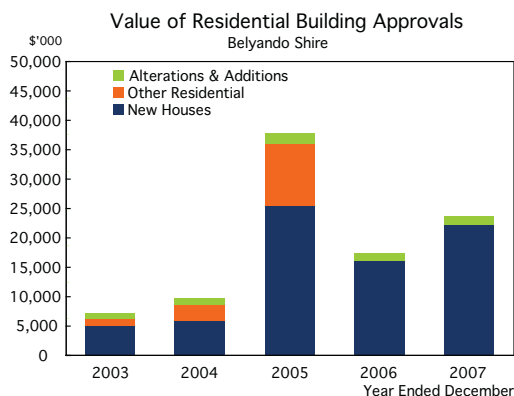
## Building Approvals, Belyando Shire

	Year Ended DEC 07	% Change on Year Ended DEC 06
<i>Number</i>		
New Houses	68	19.3%
Other Dwellings	0	n.a.
<b>Total Residential</b>	<b>68</b>	<b>19.3%</b>
<i>Value (\$'000)</i>		
New Houses	22,265	39.3%
Other Dwellings	0	n.a.
Alterations & Additions	1,339	4.9%
Total Residential	23,602	36.8%
Non-Residential (a)	25,556	6,920.9%
<b>Total Building</b>	<b>49,158</b>	<b>179.0%</b>

Note: Other dwellings includes flats, units and apartments. (a) The significant growth in the value of non-residential building approvals is likely a reflection of the release of industrial land in Moranbah.

Source: ABS 8731.0

The value of residential building approvals in Belyando Shire was \$23.6 million in 2007, 36.8% more than in 2006. Growth in approval value was attributable to increases in value for new house approvals (up 39.3%) and approvals of alterations and additions (4.9%).



Source: ABS 8731.0

Meanwhile, the value of non-residential building approvals was \$25.6 million in 2007, approximately 70 times more than in 2006, which is likely attributable to the development and release of industrial land in Moranbah. Additionally, investment in Belyando Shire has been boosted by significant mining and energy infrastructure developments.

## Industry

**Coal** - Coal mining is a key industry in Belyando Shire, with key coal mines in the Shire including Blair Athol, Goonyella / Riverside, Moranbah North and Peak Downs. In recent years, Belyando Shire has accounted for approximately 40% of total saleable coal production in the Mackay SD.

**Agriculture** - Broad acre cropping is the key industry in the town of Clermont, with the main production including wheat, sorghum and sunflower. About 100 kilotonnes of wheat, 175 kilotonnes of sorghum and 12.8 kilotonnes of sunflower were produced in 2001.

Beef production is another industry that contributes significantly to the Shire's economy, supported by Clermont's state-of-the-art saleyard facility. Approximately 328,000 cattle were used in beef production in 2001.

## Major Projects

**Clermont Coal Mine** - The Clermont Coal Mine, 15 kilometres east of the current Blair Athol mine and 10km north of Clermont, will be an open cut mine producing approximately 10 – 15 Mt per annum of thermal coal. This mine will likely replace production from the Blair Athol Mine, which is estimated to close by 2010. Capital expenditure for the project totals approximately \$950 million, with completion anticipated by 2010.

**Goonyella System Rail Upgrade** - This \$11 million Queensland Rail project will upgrade various sections across the Goonyella rail system, including the rail lines between Coppabella and Hay Point, and Dalrymple Bay. 17.8 kilometres of track will be added between Coppabella and Gregory.

**Isaac Plains Coal Expansion Project** - Vale and Aquila Resources Ltd have committed \$103 million to this expansion project, which will increase production at Isaac Plains from 1.9 to 2.8 Mt per annum.

**Carborough Downs Spur Line** - This recently completed \$22 million project by Queensland Rail provides a spur loop to service the mine near Broadlea.

**Moranbah Southern Spur Pipeline** - This recently completed \$19 million project involved the construction of a 70km pipeline from the Moranbah terminal storage to south Moranbah to facilitate the transport of water to the south of Moranbah.

**Central Queensland Gas Pipeline** - AGL Energy/Arrow Energy is the proponent of the \$200 million construction, ownership, and operation of a 440km, high pressure coal seam gas link from Moranbah to Gladstone.

**Broadsound to Nebo Transmission Line** - Powerlink will construct a \$100 million, 275kv transmission line between the Broadsound and Nebo substations as part of a three stage solution to reinforce high voltage supply of electricity to North Queensland.

**Highview Moranbah and Dysart** - The Altitude Corporation have committed to two residential development projects which will include the construction of 50 apartments in Moranbah and 24 apartments in Dysart. Starting prices will be \$299,500.

## For More Information

### Isaac Regional Council

Phone: 07 4983 1133 or 07 4950 5133 or 07 4964 5400

Web: [www.isaac.qld.gov.au](http://www.isaac.qld.gov.au)

*DISCLAIMER: The data produced in this document is believed to be the most recent and accurate data available at the time of publication. No responsibility is accepted for any inadvertent errors.*

Prepared by:

**AECgroup**

Phone: (07) 3831 0577

Web: [www.aecgrouppltd.com](http://www.aecgrouppltd.com)